

AEROC floor elements

We produce floor elements with standard dimensions. Thickness of all elements is 250 mm and width is 600 mm. The length is 2,4m – 6,0m and the interval is 400 mm. It means that the standard length is 2,4m; 2,8m; 3,2m; 3,6m; 4,0m; 4,4m; 4,8m; 5,2m; 5,6m; 6,0m.

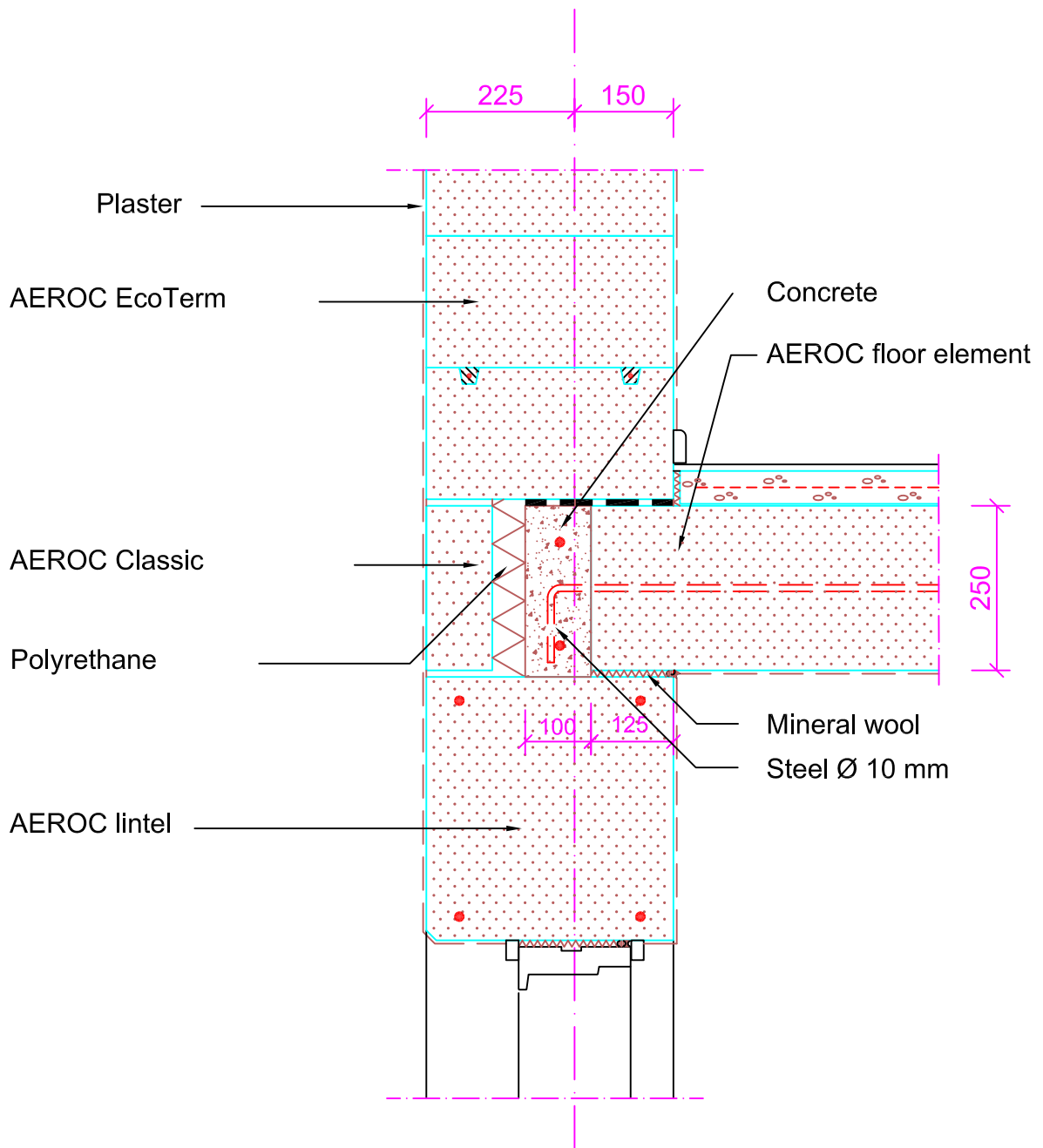
In special order we can produce floor elements with the length interval 200 mm. Also in special order we can produce the floor elements with the width 300 mm. All these elements are with extra cost.

The standard load category of AEROC floor elements is 4,0 kN/m² (permissible applied load). We do not produce elements with other load category.

Depth of bearing

The minimum depth of the bearing of a floor element is normally 90 mm. In special cases, where element is supported over its entire width and the support is smooth and straight (such as steel) 70 mm can be allowed.

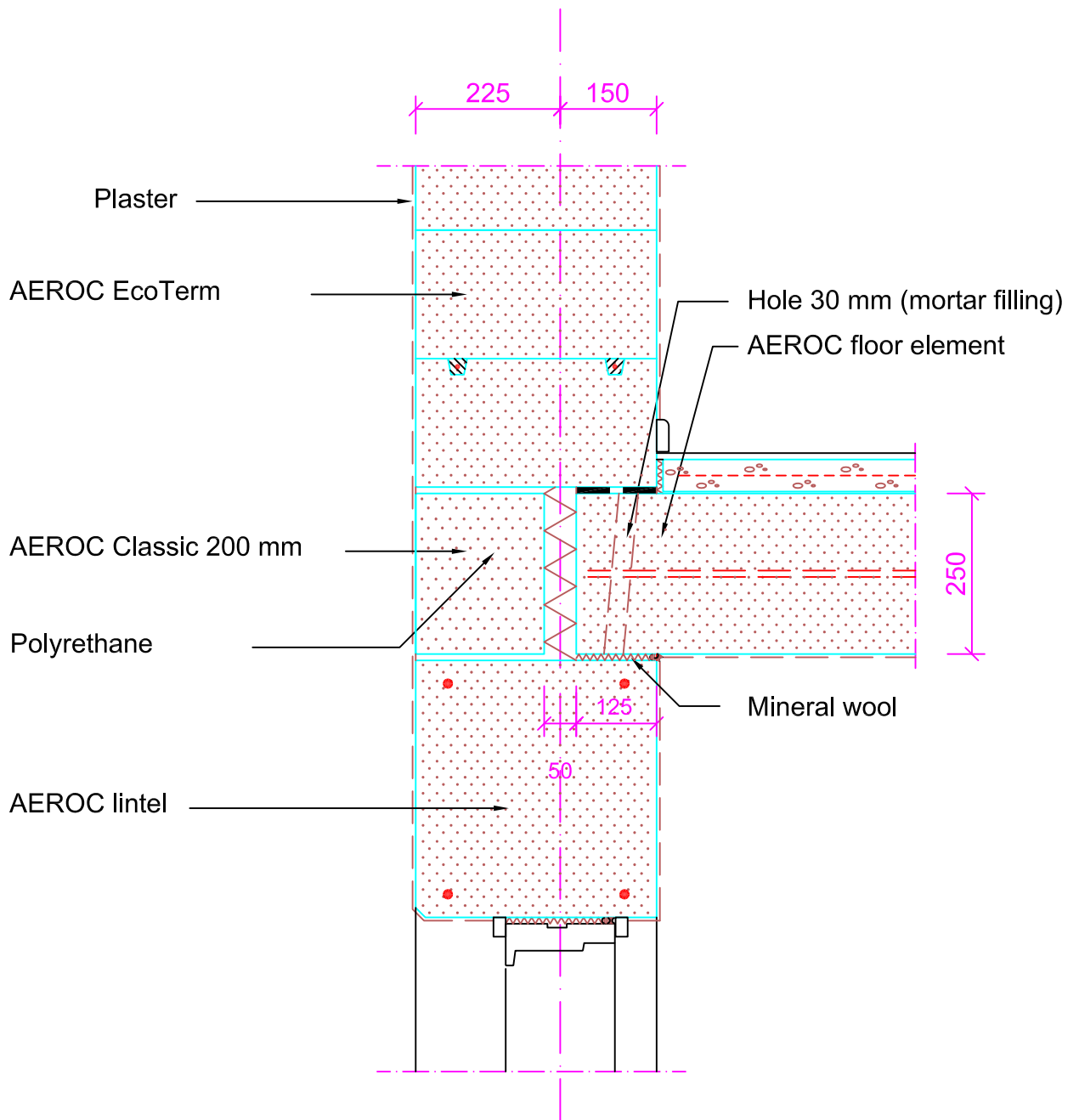
The maximum depth of the bearing is not limited. In the external walls the depth of the bearing is limited by the width of blocks. On the drawings you see that there must be the additional block on the outer side of the wall. The minimum thickness of a loadbearing partition wall that be loaded on both sides is 200 mm.



Drawing content

Connection of external wall AEROC 375 and AEROC floor element with concrete beam at the end of elements

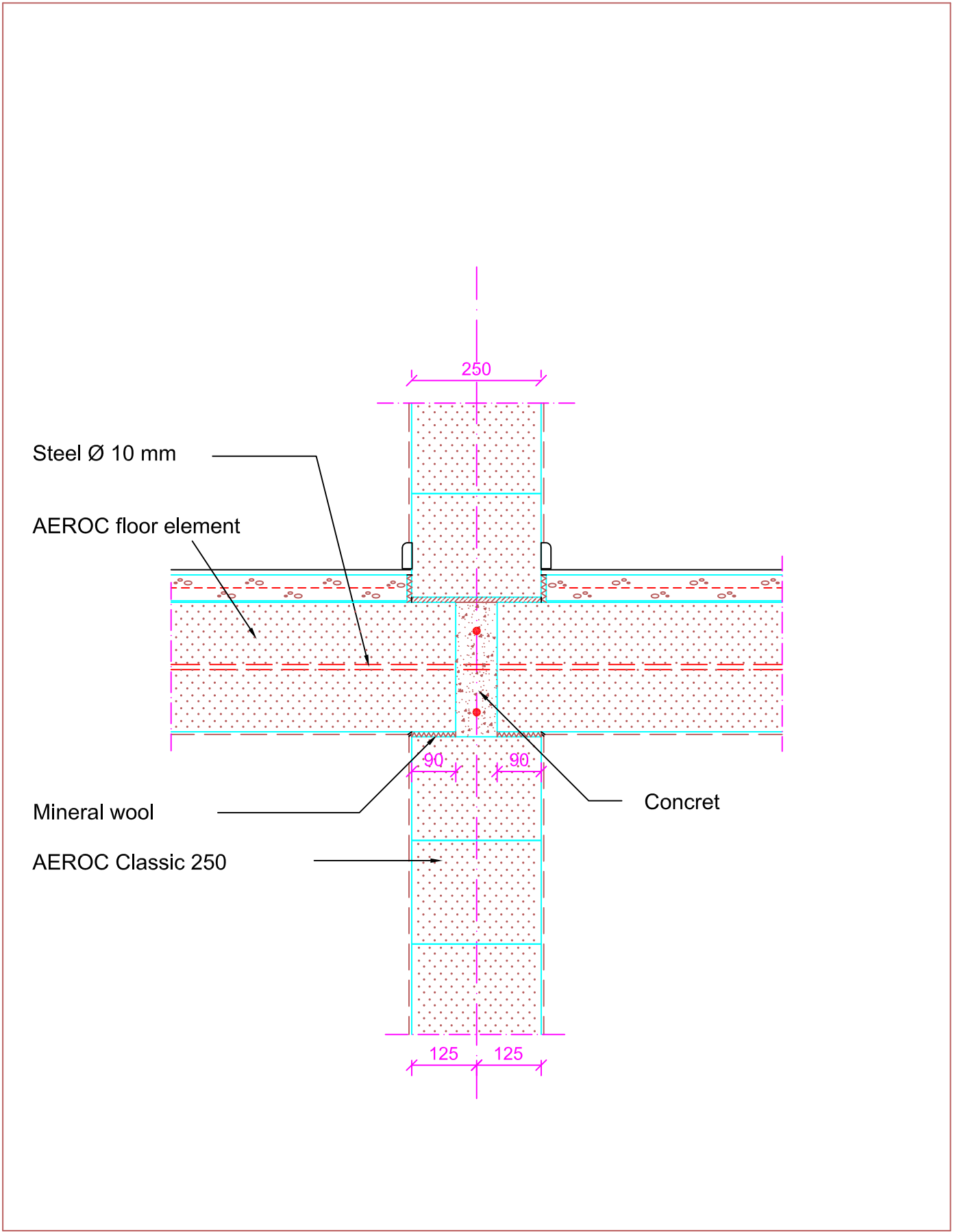
AEROC



Drawing content

Connection of external wall AEROC 375
and AEROC floor element

AEROC



	Drawing content Connection of loadbearing partition wall and AEROC floor element	
